

电流电压传感器
选型手册
Current & Voltage Transducers
Selection Guide

宁波中车时代传感技术有限公司
NINGBO CRRC TIMES TRANSDUCER TECHNOLOGY CO., LTD.

CRRC

宁波中车时代传感技术有限公司
NINGBO CRRC TIMES TRANSDUCER TECHNOLOGY CO., LTD.
地址/Address: 浙江省宁波市江北区新街路138号
No.138 Xinyue Road, Jiangbei, Ningbo, Zhejiang, 315021, China
电话/Tel: 87534108
传真/Fax: 87531583
邮箱/Email: crcsensor@crzric.com
网址/Website: www.crcsensor.com
2018年5月



目录 / TABLE OF CONTENT

选型指南 Application area	PAGE / 01
电流传感器规格及技术参数 Type & Specification of Series Current Transducers	PAGE / 05
电压传感器规格及技术参数 Type & Specification of Series Voltage Transducers	PAGE / 73

电流传感器 / Current transducers

电流传感器 / Current transducers

序号 No.	型号 Type	额定电压 / Rated Voltage	额定电流(A) / Rated Current	额定功率(A) / Rated Power	精度等级 / Accuracy	基本误差 / Accuracy (excluding offset), (%)	线性误差 (%) / Linearity	耐压 / Isolation Voltage	安装 / Mount
1	NACL300P-S5	±12 ~ ±15(+5%)	±70A ~ ±100A	100A ~ 1000A	±0.5%	±0.1%	3kV	05	
2	NACL300P-S6	±12 ~ ±15(+5%)	±200A ~ ±100A	100A ~ 200A	±0.5%	±0.1%	3kV	07	
3	NACL300P-S5	±12 ~ ±15(+5%)	±70A ~ ±100A	100A ~ 100A	±0.5%	±0.1%	3kV	09	
4	NACL300P-S5-SP2	±15 ~ ±18(+5%)	±100A ~ ±100A	100A ~ 100A	±0.4%	±0.1%	3kV	11	
5	NACL300C-S5	±15 ~ ±18(+5%)	±100A ~ ±700A	300A ~ 400A	±0.7%	±0.1%	5.5kV	13	
6	NACL300H-S2	±12 ~ ±15(+5%)	±100A	300A	±0.5%	±0.1%	7kV	15	
7	NACL300B-S5-SP1	±12 ~ ±15(+5%)	±100A	300A	±0.5%	±0.1%	3kV	17	
8	NACL300B-S5-SP2	±15 ~ ±24(+5%)	±1000A	500A	±0.6%	±0.1%	3kV	19	
9	NACL366U-S1	±15 ~ ±18(+5%)	±150A	366A	±0.5%	±0.1%	3kV	21	
10	NACL1000Q-S1	±15 ~ ±24(+20%)	±2400A	1000A	±0.4%	±0.1%	13.4kV	23	
11	NACL1000-S2	±15 ~ ±24(+5%)	±2000A	1000A	±0.4%	±0.1%	7kV	25	
12	NACL1000-S1	±15 ~ ±24(+5%)	±1800A ~ ±200A	1000A	±0.4%	±0.1%	1.8kV	27	
13	NACL1000B	±15 ~ ±24(+5%)	±1800A ~ ±340A	1000A	±0.4%	±0.1%	3.8kV	29	
14	NACL2000B1	±15 ~ ±24(+5%)	±3000A ~ ±380A @ ±24V	2000A	±0.3%	±0.1%	10kV	31	
15	NACLXXXX	±15 ~ ±18(+5%)	±150A ~ ±100A	100A ~ 100A	±0.5%	±0.1%	3kV	33	
16	NACLXXXX-S5-SP1V	±15 ~ ±18(+5%)	±100A ~ ±100A	100A ~ 100A	±0.5%	±0.1%	4kV	35	
17	NACLXXXX-S5-SP1V	±15 ~ ±18(+5%)	±400A ~ ±200A	200A ~ 1000A	±0.5%	±0.1%	6kV	37	
18	NACLXXXX-S5V	±15 ~ ±18(+5%)	±1000A ~ ±1000A	100A ~ 2000A	±0.7%	±0.1%	6kV	39	
19	NACLXXXX-S5V	±15 ~ ±18(+5%)	±1500A ~ ±200A	100A ~ 2000A	±0.7%	±0.1%	5kV	41	
20	NACLXXXX-S5V	±15 ~ ±18(+5%)	±1500A ~ ±200A	500A ~ 1500A	±0.7%	±0.1%	5kV	43	
21	NACLXXXX-S5V	±12 ~ ±15(+5%)	±2000A ~ ±3000A	1000A ~ 3000A	±0.7%	±0.1%	6kV	45	
22	NACLXXXX-S5-SP1V	±15 ~ ±18(+5%)	±1000A	300A	±0.5%	±0.1%	6kV	47	
23	NACLXXXX-T-FRMN	5V±0.5V	±2.5A ~ ±2.5A	10A ~ 50A	±0.5%	±0.1%	4.8kV	49	
24	NACA300L-S6-SP2VA	5 ~ ±15(+5%)	±200A ~ ±50A	200A ~ 500A	±0.5%	±0.1%	2.5kV	51	
25	NACA300M-S5-SP2VA	5 ~ ±15(+5%)	±300A ~ ±900A	200A ~ 400A	±0.5%	±0.1%	2kV	53	
26	NACA300P-S6VA	5 ~ ±15(+5%)	±800A	800A	±0.5%	±0.1%	2kV	55	
27	NACA300Q-S6VA	5 ~ ±15(+5%)	±800A	800A	±0.5%	±0.1%	2kV	57	
28	NACA300B-S5VA	5 ~ ±15(+5%)	通道 / channel 1 ±10 通道 / channel 2 ±150	通道 / channel 1 ±10 通道 / channel 2 ±150	通道 / channel 1 ±0.5% 通道 / channel 2 ±0.5%	±0.6%	±0.1%	2.5kV	59
29	NACA300-S5VA	5 ~ ±15(+5%)	通道 / channel 1 ±10 通道 / channel 2 ±150	通道 / channel 1 ±10 通道 / channel 2 ±150	通道 / channel 1 ±0.5% 通道 / channel 2 ±0.5%	±0.5%	±0.1%	2kV	65
30	NACA300-S5VA	5 ~ ±15(+5%)	通道 / channel 1 ±10 通道 / channel 2 ±150	通道 / channel 1 ±10 通道 / channel 2 ±150	通道 / channel 1 ±0.5% 通道 / channel 2 ±0.5%	±0.5%	±0.1%	2kV	65
31	NACLXXX-S1V	±15 ~ ±18(+5%)	±1000A ~ ±50A	300A ~ 10A	±0.5%	±0.1%	5.5kV	71	
31	NACLXXX-P4VFN	5 ~ ±15(+5%)	±1500A ~ 1.7A	300A ~ 1A	±0.5%	±0.1%	3kV	73	
32	NACLXXX-S5N	15 ~ ±15(+5%)	±200 ~ ±400A	200A ~ 400A	±0.5%	±0.1%	5.4kV	75	
33	NACL2000-S5-SP1	24V±1%+5%	±1400A	2000A	±0.5%	±0.1%	10kV	77	
34	NACL2000-S5D	5.3V±1%+5%	±10A	±2A	±0.5%	±0.1%	3.5kV	79	

电压传感器 / Voltage transducers

电压传感器 / Voltage transducers

序号 / No.	型号名称 / Type Name	额定电压 / Supply Voltage	量程范围(A) / Measuring Range	额定输出电流(A) / Primary Nominal current	额定输出范围 / Secondary Nominal output	基本误差 / Accuracy(excluding offset) (%)	线性误差 / Linearity (%)	耐压 / Isolation Voltage	页码 / Page
1	NACL125P-S6	±15~±15kV	±10A~±300A	50mA~250mA	±25mA~±30mA	±0.8%	0.2%	4.2kV	81
2	NACL125P-S6	±1 (12~15) (kV)	±75V~±100V	50A~1000V	25mA	±0.8%	0.2%	4.8kV	81
3	NACL125P-S6	±15~±24 (kV)	±150V~±600V	100V~400V	50mA	±0.2%	0.1%	6.0kV	85
4	NACL125P-S6	±15~±24 (kV)	±450V	100V~300V	50mA	±0.1%	0.1%	6.0kV	87
5	NACL125P-S6	±12~±24 (kV)	±75V~±300V	50V~200V	50mA	±0.1%	0.1%	3.3kV	89
6	NACL125P-S6	±15~±24 (kV)	±300V	300V	50mA	±0.1%	0.1%	11.5kV	91
7	NACL125P-S6	±1 (12~15) (kV)	±100V~±100V	±60V~±100V	±25mA	±0.8%	0.2%	4.2kV	91
8	NACL125P-S6	±15~±24 (kV)	±150V~±300V	100V~200V	50mA	±0.5%	0.05%	8.5kV	91
9	NACL125P-S6	±400V~±800V	±800V~±800V	280V~420V	50mA~70mA	±0.6%	0.1%	9.5kV	91
10	NACL125P-S6	±15~±15kV	±300V	100V	7V	±0.2%	0.1%	8kV	91



NACL.XXXP-S6
系列闭环霍尔电流传感器

Closed loop Hall current transducer



功能要求 / Function

NACL.XXXP-S6系列闭环霍尔电流传感器具有高精度、高线性度、低温度漂移、广泛的工作温度范围、良好的电磁兼容性、体积小、重量轻、安装方便等特点。适用于交流变频调速、电机控制、变频器、不间断电源 UPS 等行业的电气设备的系统控制与检测。

The transducer has the characteristics of High-accuracy, Low temperature drift and strong overload capability. It is suitable for system control and detection equipment such as variable frequency drive, battery supplied applications, uninterruptible power supplies (UPS) and other industrial fields.

概况 / Product Introduction

NACL.XXXP-S6系列闭环霍尔电流传感器的初级、次级之间是绝缘的；用于测量直流、交流和脉动电流。

For the electronic measurement of currents AC, DC, pulsed... with galvanic separation between the primary circuits and the secondary circuits.

性能要求 / Product performance

序号 / No.	项目名称 / Item Name	NACL125P-S6/SP3	NACL125P-S6	NACL125P-S6/SP3	NACL125P-S6/SP3	NACL125P-S6/SP3
1	额定输出电流 / Primary nominal current	50A	100A	150A	200A	250A
2	测量范围 / Primary current measuring range	±100A	±70A	±150A	±200A	±200A
3	额定输出范围 / Output current	±25mA	50mA	±50mA	±75mA	±25mA
4	电源电压 V _L / Supply voltage	±12V~±15V (+1.5%)	±12V~±15V	±12V~±15V	±12V~±15V	±12V~±15V
5	基本误差 / Accuracy(excluding offset)	±0.05%	±0.1%	±0.1%	±0.1%	±0.1%
6	非线性误差 / Non-linearity error	±0.1mA	±0.2mA	±0.1mA	±0.2mA	±0.2mA
7	线性度 / Linearity error	±0.2%	±0.2%	±0.2%	±0.2%	±0.1%
8	零点温度漂移 / Zero temperature coefficient of ZD	±0.25mA @ (0~70°C) ±0.2mA @ (0~25°C) ±0.25mA @ (25~85°C)	±0.5mA @ (0~70°C) ±0.5mA @ (0~25°C) ±0.25mA @ (25~85°C)	±0.5mA @ (0~70°C) ±0.5mA @ (0~25°C) ±0.25mA @ (25~85°C)	±0.5mA @ (0~70°C) ±0.5mA @ (0~25°C) ±0.25mA @ (25~85°C)	±0.5mA @ (0~70°C) ±0.5mA @ (0~25°C) ±0.25mA @ (25~85°C)
9	绝缘电阻 / Insulation resistance	1200M	1200M	1200M	1200M	1200M
10	爬电距离 / Creep distance	>14mm	>14mm	>14mm	>14mm	>14mm
11	电气强度 / Dielectric strength	±15mA @ 1kV	±15mA @ 1kV	±15mA @ 1kV	±15mA @ 1kV	±15mA @ 1kV
12	频率带宽 / Frequency bandwidth	DC~100 kHz	DC~100 kHz	DC~100 kHz	DC~100 kHz	DC~100 kHz

NACL.XXXP1-S6
系列闭环霍尔电流传感器

Closed loop Hall current transducer



功能要求 / Function

NACL.XXXP1-S6系列闭环霍尔电流传感器具有高精度、低温度漂移、体积小等特点。适用于交流变频调速、电机控制、变频器、不间断电源 UPS 等行业的电气设备的系统控制与检测。

The transducer has the characteristics of High-accuracy, Low temperature drift and High-linearity. It is suitable for system control and detection equipment such as variable frequency drive, battery supplied applications, uninterruptible power supplies (UPS) and other industrial fields.

概况 / Product Introduction

NACL.XXXP1-S6系列闭环霍尔电流传感器的初级、次级之间是绝缘的；用于测量直流、交流和脉动电流。

For the electronic measurement of currents AC, DC, pulsed... with galvanic separation between the primary circuits and the secondary circuits.

性能要求 / Product performance

序号 / No.	项目名称 / Item Name	主要参数 / Electrical characteristics	NACL125P1-S6	NACL125P1-S6
1	额定输出电流 / Primary nominal current	50A	100A	125A
2	测量范围 / Primary current measuring range	±300A	±150A	±200A
3	额定输出范围 / Output current	±150mA	±50mA	±250mA
4	电源电压 V _L / Supply voltage	±12V~±15V (+1.5%)	±12V~±15V	±12V~±15V
5	基本误差 / Accuracy(excluding offset)	±0.04%	±0.04%	±0.04%
6	非线性误差 / Non-linearity error	±0.25mA	±0.25mA	±0.4mA
7	线性度 / Linearity error	±0.1%	±0.1%	±0.1%
8	零点温度漂移 / Zero temperature coefficient of ZD	±0.25mA @ (0~70°C) ±0.6mA @ (25~85°C)	±0.5mA @ (0~70°C) ±0.6mA @ (25~85°C)	±0.5mA @ (0~70°C) ±0.6mA @ (25~85°C)
9	绝缘电阻 / Insulation resistance	1200M	1200M	1200M
10	爬电距离 / Creep distance	>14mm	>14mm	>14mm
11	电气强度 / Dielectric strength	±15mA @ 1kV	±15mA @ 1kV	±15mA @ 1kV
12	频率带宽 / Frequency bandwidth	DC~100 kHz	DC~100 kHz	DC~100 kHz

NACL.XXXR-S5
系列闭环霍尔电流传感器

Closed loop Hall current transducer



功能要求 / Function

NACL.XXXR-S5系列闭环霍尔电流传感器具有高精度、高线性度、低温度漂移、广泛的工作温度范围、良好的电磁兼容性、体积小、重量轻、安装方便等特点。适用于交流变频调速、电机控制、变频器、不间断电源 UPS 等行业的电气设备的系统控制与检测。

The transducer has the characteristics of High-accuracy, Low temperature drift and High-linearity. It is suitable for system control and detection equipment such as variable frequency drive, battery supplied applications, uninterruptible power supplies (UPS) and other industrial fields.

概况 / Product Introduction

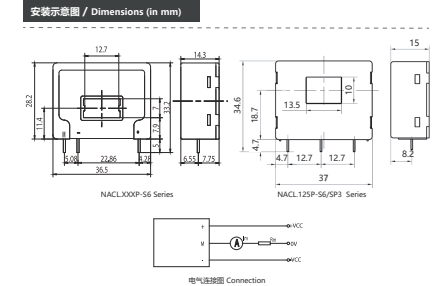
NACL.XXXR-S5系列闭环霍尔电流传感器的初级、次级之间是绝缘的；用于测量直流、交流和脉动电流。

For the electronic measurement of currents AC, DC, pulsed... with galvanic separation between the primary circuits and the secondary circuits.

性能要求 / Product performance

序号 / No.	项目名称 / Item Name	主要参数 / Electrical characteristics	NACL125R-S5	NACL125R-S5	NACL125R-S5/SP3
1	额定输出电流 / Primary nominal current	50A	100A	200A	300A
2	测量范围 / Primary current measuring range	±70A	±150A	±300A	±500A
3	额定输出范围 / Output current	50mA	50mA	100mA	150mA
4	电源电压 V _L / Supply voltage	±12~±15V (+1.5%)	±12~±15V	±12~±15V	±12~±15V
5	基本误差 / Accuracy(excluding offset)	±0.04%	±0.04%	±0.04%	±0.04%
6	非线性误差 / Non-linearity error	±0.25mA	±0.25mA	±0.25mA	±0.25mA
7	线性度 / Linearity error	±0.1%	±0.1%	±0.1%	±0.1%
8	零点温度漂移 / Zero temperature coefficient of ZD	±0.5mA @ (0~70°C) ±0.5mA @ (25~85°C)	±0.5mA @ (0~70°C) ±0.5mA @ (25~85°C)	±0.5mA @ (0~70°C) ±0.5mA @ (25~85°C)	±0.5mA @ (0~70°C) ±0.5mA @ (25~85°C)
9	绝缘电阻 / Insulation resistance	1200M	1200M	1200M	1200M
10	爬电距离 / Creep distance	>14mm	>14mm	>14mm	>14mm
11	电气强度 / Dielectric strength	±15mA @ 1kV	±15mA @ 1kV	±15mA @ 1kV	±15mA @ 1kV
12	频率带宽 / Frequency bandwidth	DC~100 kHz	DC~100 kHz	DC~100 kHz	DC~100 kHz
13	爬电距离 / Creep distance	±15mA @ (0~15V) @ 1kV	±15mA @ (0~15V) @ 1kV	±15mA @ (0~15V) @ 1kV	±15mA @ (0~15V) @ 1kV
14	绝缘电阻 / Insulation resistance	±500 MΩ @ 2500V	±500 MΩ @ 2500V	±500 MΩ @ 2500V	±500 MΩ @ 2500V

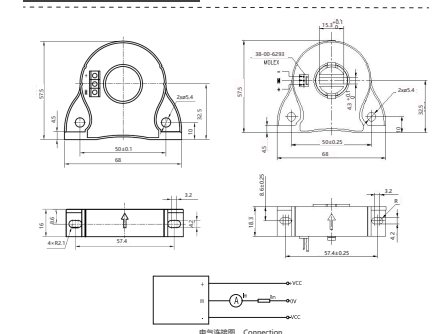
序号 / No.	项目名称 / Item Name	主要参数 / Main electrical data	NACL125P-S6	NACL125P-S6	NACL125P-S6/SP3
15	额定电压 / Rated voltage	±500 MΩ @ 2500V	±500 MΩ @ 2500V	±500 MΩ @ 2500V	±500 MΩ @ 2500V
16	工作温度 / Ambient operating temperature	25°C~85°C	25°C~85°C	25°C~85°C	25°C~85°C
17	储存温度 / Ambient storage temperature	-40°C~90°C	-40°C~90°C	-40°C~90°C	-40°C~90°C
18	重量 / Weight	±20g	±20g	±20g	±20g



安装接口要求 / Mechanical characteristics

1	电源接线方式 / Power connection method	电桥桥臂安装 / PCB mounting	NACL125P-S6/SP3 1.5 mm (2.5mm)	NACL125P-S6/SP3 1.5 mm (2.5mm)
2	额定输出端子 / Rated output terminal	电桥桥臂安装 / PCB mounting	NACL125P-S6/SP3 0.63 mm x 0.63mm	NACL125P-S6/SP3 0.63 mm x 0.63mm
3	二次回路端子尺寸 / Secondary circuit terminal size	电桥桥臂安装 / PCB mounting	NACL125P-S6/SP3 0.63 mm x 0.63mm	NACL125P-S6/SP3 0.63 mm x 0.63mm

序号 / No.	项目名称 / Item Name	主要参数 / Main electrical data	NACL125R-S5	NACL125R-S5	NACL125R-S5/SP3
15	额定电压 / Rated voltage	±500 MΩ @ 2500V	±500 MΩ @ 2500V	±500 MΩ @ 2500V	±500 MΩ @ 2500V
16	工作温度 / Ambient operating temperature	25°C~85°C	25°C~85°C	25°C~85°C	25°C~85°C
17	储存温度 / Ambient storage temperature	-40°C~90°C	-40°C~90°C	-40°C~90°C	-40°C~90°C
18	重量 / Weight	±20g	±20g	±20g	±20g



安装接口要求 / Mechanical characteristics

1	电源接线方式 / Power connection method	电桥桥臂安装 / PCB mounting	NACL125R-S5/SP3 2.5 mm	NACL125R-S5/SP3 2.5 mm
2	额定输出端子 / Rated output terminal	电桥桥臂安装 / PCB mounting	NACL125R-S5/SP3 2.5 mm	NACL125R-S5/SP3 2.5 mm
3	二次回路端子尺寸 / Secondary circuit terminal size	电桥桥臂安装 / PCB mounting	NACL125R-S5/SP3 2.5 mm	NACL125R-S5/SP3 2.5 mm
4	爬电距离 / Creep distance	电桥桥臂安装 / PCB mounting	NACL125R-S5/SP3 2.5 mm	NACL125R-S5/SP3 2.5 mm
5	电气强度 / Dielectric strength	电桥桥臂安装 / PCB mounting	NACL125R-S5/SP3 2.5 mm	NACL125R-S5/SP3 2.5 mm

NAACLXXXR1-S5/SP2

系列闭环霍尔电流传感器



功能要求 / Function

NAACLXXXR1-S5/SP2系列闭环霍尔电流传感器具有高精度、高线性度、低温漂、迟滞等特点...

The transducer has the characteristics of High-accuracy, Wide frequency bandwidth, Low temperature of drift and High-linearity...

概况 / Product introduction

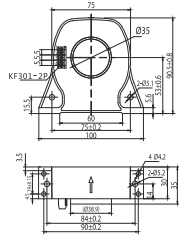
NAACLXXXR1-S5/SP2系列闭环霍尔电流传感器适用于对交流、直流及脉冲电流的高精度测量...

性能要求 / Product performance

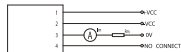
Table with 3 columns: Item No., Item Name, and Main Parameters / Electrical characteristics. Lists 17 technical specifications.



安装示意图 / Dimensions (in mm)



NAACLXXXR1-S5/SP2 Series



电气连接图 Connection

安装接口要求 / Mechanical characteristics

Table with 4 columns: Item No., Item Name, and Main Parameters / Electrical characteristics. Lists 4 mechanical requirements.

NAACLXXX-S5

系列闭环霍尔电流传感器



功能要求 / Function

NAACLXXX-S5系列闭环霍尔电流传感器具有高精度、低温漂、高线性度等特点...

The transducer has the characteristics of High accuracy, Wide frequency bandwidth, Low temperature of drift and High-linearity...

概况 / Product introduction

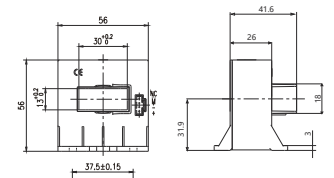
NAACLXXX-S5系列闭环霍尔电流传感器适用于对交流、直流、脉冲电流的高精度测量...

性能要求 / Product performance

Table with 3 columns: Item No., Item Name, and Main Parameters / Electrical characteristics. Lists 17 technical specifications.



安装示意图 / Dimensions (in mm)



NAACL400C-S5/SP3 Series

电气连接图 Connection

安装接口要求 / Mechanical characteristics

Table with 2 columns: Item No. and Item Name. Lists 1 mechanical requirement.

NAACL300H2-S2

闭环霍尔电流传感器



功能要求 / Function

NAACL300H2-S2电流传感器具有高精度、高线性度、低温漂等特点...

The transducer has the characteristics of High-accuracy, Wide frequency bandwidth, Low temperature of drift and High-linearity...

概况 / Product introduction

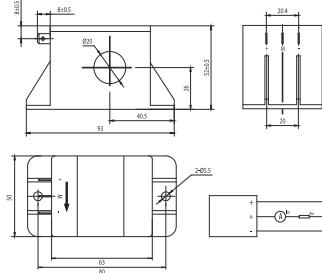
NAACL300H2-S2闭环霍尔电流传感器适用于对交流、直流及脉冲电流的高精度测量...

性能要求 / Product performance

Table with 3 columns: Item No., Item Name, and Main Parameters / Electrical characteristics. Lists 17 technical specifications.



安装示意图 / Dimensions (in mm)



NAACL300H2-S2 Series

电气连接图 Connection

安装接口要求 / Mechanical characteristics

Table with 4 columns: Item No., Item Name, and Main Parameters / Electrical characteristics. Lists 4 mechanical requirements.

NAACL300B3-S5

系列闭环霍尔电流传感器



功能要求 / Function

NAACL300B3-S5系列闭环霍尔电流传感器具有高精度、低温漂、高线性度等特点...

The transducer has the characteristics of High-accuracy, Wide frequency bandwidth, Low temperature of drift and High-linearity...

概况 / Product introduction

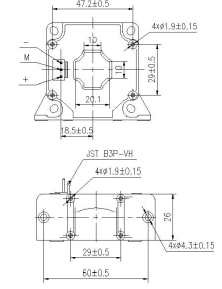
NAACL300B3-S5系列闭环霍尔电流传感器的初次、次级之间是绝缘的，用于测量直流、交流和脉冲电流。

性能要求 / Product performance

Table with 3 columns: Item No., Item Name, and Main Parameters / Electrical characteristics. Lists 17 technical specifications.



安装示意图 / Dimensions (in mm)



NAACL300B3-S5/SP1 Series

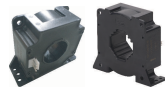
电气连接图 Connection

安装接口要求 / Mechanical characteristics

Table with 4 columns: Item No., Item Name, and Main Parameters / Electrical characteristics. Lists 4 mechanical requirements.

NACL500B2-S5

系列闭环霍尔电流传感器



功能要求 / Function

NACL500B2-S5系列闭环霍尔电流传感器具有精度高、低温漂、系数、体积小等特点...

概况 / Product introduction

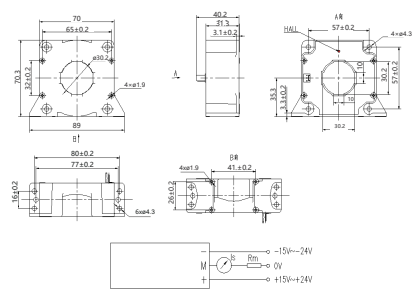
NACL500B2-S5系列闭环霍尔电流传感器适用于交流、直流和脉动电流的高精度测量...

性能要求 / Product performance

Table with 4 columns: Item No., Item Name, Main Parameters, and Electrical Characteristics. Lists 17 items including primary current, accuracy, and temperature stability.



安装示意图 / Dimensions (in mm)



安装接口要求 / Mechanical characteristics

Table with 3 columns: Item No., Item Name, and Mechanical Characteristics. Lists 3 items: recommended fastening torque, bar bar, and connection of assembly.

NACL366U-S5

闭环霍尔电流传感器



功能要求 / Function

NACL366U-S5电流传感器具有高精度、线性佳、低温漂等特点...

概况 / Product introduction

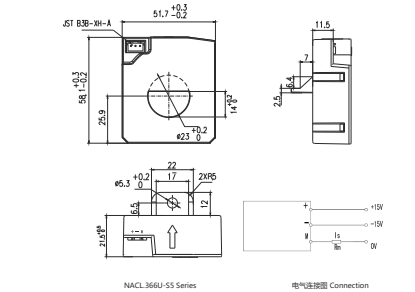
NACL366U-S5闭环霍尔电流传感器适用于交流、直流和脉动电流的高精度测量...

性能要求 / Product performance

Table with 4 columns: Item No., Item Name, Main Parameters, and Electrical Characteristics. Lists 17 items including primary current, accuracy, and temperature stability.



安装示意图 / Dimensions (in mm)



安装接口要求 / Mechanical characteristics

Table with 4 columns: Item No., Item Name, Main Parameters, and Electrical Characteristics. Lists 4 items: recommended fastening torque, bar bar, and connection of secondary.

NACL1000Q-S3/N

闭环霍尔电流传感器



功能要求 / Function

NACL1000Q-S3/N电流传感器具有高精度、线性佳、低温漂等特点...

概况 / Product introduction

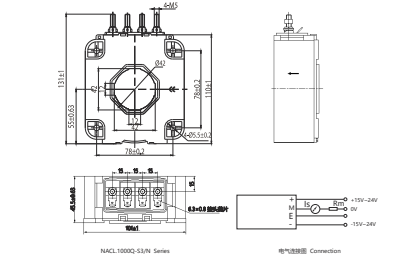
NACL1000Q-S3/N闭环霍尔电流传感器适用于交流、直流、脉冲电流的高精度测量...

性能要求 / Product performance

Table with 4 columns: Item No., Item Name, Main Parameters, and Electrical Characteristics. Lists 17 items including primary current, accuracy, and temperature stability.



安装示意图 / Dimensions (in mm)



安装接口要求 / Mechanical characteristics

Table with 3 columns: Item No., Item Name, and Mechanical Characteristics. Lists 4 items: recommended fastening torque, bar bar, and connection of secondary.

NACL1000-S2

闭环霍尔电流传感器



功能要求 / Function

NACL1000-S2电流传感器具有高精度、线性佳、低温漂等特点...

概况 / Product introduction

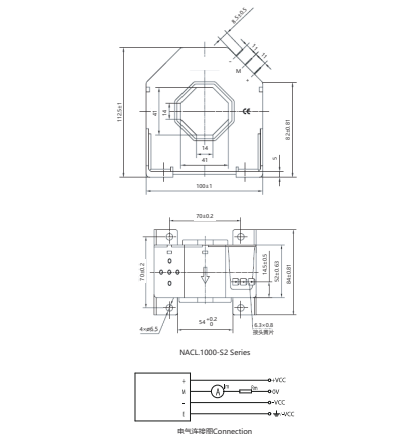
NACL1000-S2闭环霍尔电流传感器适用于交流、直流、脉冲电流的高精度测量...

性能要求 / Product performance

Table with 4 columns: Item No., Item Name, Main Parameters, and Electrical Characteristics. Lists 17 items including primary current, accuracy, and temperature stability.



安装示意图 / Dimensions (in mm)



安装接口要求 / Mechanical characteristics

Table with 4 columns: Item No., Item Name, Main Parameters, and Electrical Characteristics. Lists 4 items: recommended fastening torque, bar bar, and connection of secondary.

NAACL1000B-S1 系列闭环霍尔电流传感器



功能要求 / Function

NAACL1000B-S1系列闭环霍尔电流传感器具有高精度、高线性度、低温度等特点...

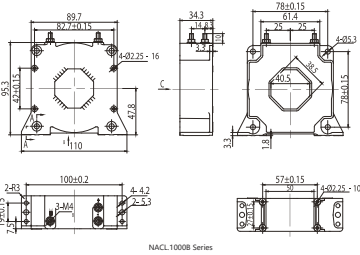
概况 / Product introduction

NAACL1000B-S1系列闭环霍尔电流传感器适用于交流、直流、脉冲电流的高精度测量...

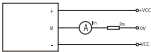
性能要求 / Product performance

Table with 4 columns: Item, Item Name, Main Parameters, and NAACL1000B-S1/P1, NAACL1000B-S1/P2, NAACL1000B-S1/P3.

安装示意图 / Dimensions (in mm)



NAACL1000B Series



电气连接图 Connection

安装接口要求 / Mechanical characteristics

Table with 5 columns: Item No., Item Name, Item, Main Parameters, and NAACL1000B-S1/P1, NAACL1000B-S1/P2, NAACL1000B-S1/P3.

NAACL1000B 系列闭环霍尔电流传感器



功能要求 / Function

NAACL1000B系列闭环霍尔电流传感器具有高精度、高线性度、低温度等特点...

概况 / Product introduction

NAACL1000B系列闭环霍尔电流传感器适用于交流、直流、脉冲电流的高精度测量...

性能要求 / Product performance

Table with 5 columns: Item No., Item Name, Item, Main Parameters, and NAACL1000B-S1, NAACL1000B-S1/P1, NAACL1000B-S1/P2, NAACL1000B-S1/P3.

NAACL2000B1 系列闭环霍尔电流传感器



功能要求 / Function

NAACL2000B1系列闭环霍尔电流传感器具有高精度、高线性度、低温度等特点...

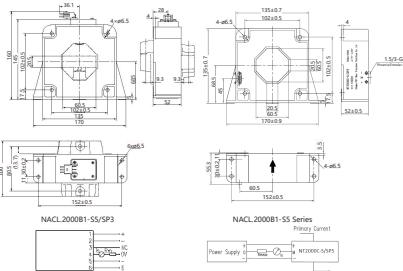
概况 / Product introduction

NAACL2000B1系列闭环霍尔电流传感器适用于交流、直流、脉冲电流的高精度测量...

性能要求 / Product performance

Table with 4 columns: Item No., Item Name, Item, Main Parameters, and NAACL2000B-4S/SP1, NAACL2000B-4S/SP2, NAACL2000B-4S/SP3, NAACL2000B-4S/SP4.

安装示意图 / Dimensions (in mm)



NAACL2000B1-5S/SP1 Series

NAACL2000B1-5S Series

电气连接图 Connection

电气连接图 Connection

安装接口要求 / Mechanical characteristics

Table with 4 columns: Item No., Item Name, Item, Main Parameters, and NAACL2000B1-4S/SP1, NAACL2000B1-4S/SP2, NAACL2000B1-4S/SP3, NAACL2000B1-4S/SP4.

NAACF.XXXC 系列开环霍尔电流传感器



功能要求 / Function

NAACF.XXXC系列开环霍尔电流传感器具有体积小、重量轻等特点...

概况 / Product introduction

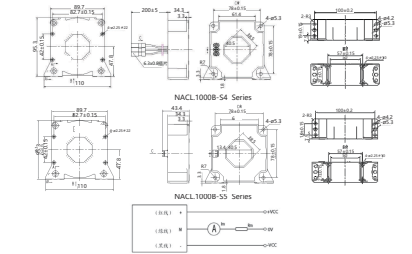
NAACF.XXXC系列开环霍尔电流传感器适用于交流、直流、脉冲电流的高精度测量...

性能要求 / Product performance

Table with 5 columns: Item No., Item Name, Item, Main Parameters, and NAACF.XXXC-S1, NAACF.XXXC-S1/P1, NAACF.XXXC-S1/P2, NAACF.XXXC-S1/P3.

Table with 5 columns: Item No., Item Name, Item, Main Parameters, and NAACL1000B-S4, NAACL1000B-S4/P1, NAACL1000B-S4/P2, NAACL1000B-S4/P3.

安装示意图 / Dimensions (in mm)



NAACL1000B-S4 Series

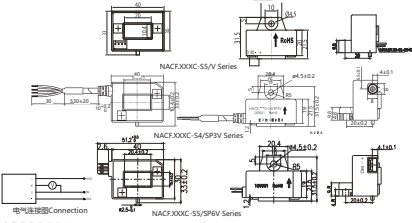
NAACL1000B-S5 Series

电气连接图 Connection

Table with 4 columns: Item No., Item Name, Item, Main Parameters, and NAACL1000B-S4, NAACL1000B-S5, NAACL1000B-S5/SP1, NAACL1000B-S5/SP2.

Table with 5 columns: Item No., Item Name, Item, Main Parameters, and NAACF.XXXC-S1, NAACF.XXXC-S1/P1, NAACF.XXXC-S1/P2, NAACF.XXXC-S1/P3.

安装示意图 / Dimensions (in mm)



NAACF.XXXC-S1 Series

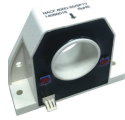
NAACF.XXXC-S4/SP1 Series

电气连接图 Connection

电气连接图 Connection

Table with 4 columns: Item No., Item Name, Item, Main Parameters, and NAACF.XXXC-S1, NAACF.XXXC-S4/SP1, NAACF.XXXC-S4/SP2, NAACF.XXXC-S4/SP3.

NAFC.XXXD-S5/SPV1 系列开环霍尔电流传感器



功能要求/ Function

NAFC.XXXD-S5/SPV1系列开环霍尔电流传感器具有精度高、体积小等特点。主要用于变频器等行业电气设备的系统控制及检测。

概况/ Product introduction

NAFC.XXXD-S5/SPV1系列开环霍尔电流传感器适用于对交流、直流、脉冲电流的精确测量。测量时一次侧与二次侧均完全绝缘。

性能要求/ Product performance

Table with 2 columns: Item No. and Main parameters / Electrical characteristics. Lists primary current, accuracy, and other technical specifications.

NAFC.XXXH1-S5 / VI 系列开环霍尔电流传感器



功能要求/ Function

NAFC.XXXH1-S5 / VI系列开环霍尔电流传感器具有体积小、精度高等特点。主要用于变频器等行业。

概况/ Product introduction

NAFC.XXXH1-S5 / VI系列开环霍尔电流传感器适用于对交流、直流、脉冲电流的精确测量。测量时一次侧与二次侧均完全绝缘。

性能要求/ Product performance

Table with 2 columns: Item No. and Main parameters / Electrical characteristics. Lists primary current, accuracy, and other technical specifications.

NAFC.XXXH1-S5 / VI 系列开环霍尔电流传感器



功能要求/ Function

NAFC.XXXH1-S5 / VI系列开环霍尔电流传感器具有体积小、精度高等特点。主要用于变频器等行业。

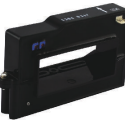
概况/ Product introduction

NAFC.XXXH1-S5 / VI系列开环霍尔电流传感器适用于对交流、直流、脉冲电流的精确测量。测量时一次侧与二次侧均完全绝缘。

性能要求/ Product performance

Table with 2 columns: Item No. and Main parameters / Electrical characteristics. Lists primary current, accuracy, and other technical specifications.

NAFC.XXXP-S5/VI 系列分体式开环霍尔电流传感器



功能要求/ Function

NAFC.XXXP-S5/VI系列分体式开环霍尔电流传感器具有体积小、测量范围宽、重量轻、功耗低等特点。

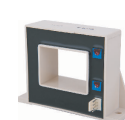
概况/ Product introduction

NAFC.XXXP-S5/VI系列分体式开环霍尔电流传感器适用于对交流、直流和脉冲电流的精确测量。测量时一次侧与二次侧均完全绝缘。

性能要求/ Product performance

Table with 2 columns: Item No. and Main parameters / Electrical characteristics. Lists primary current, accuracy, and other technical specifications.

NAFC.XXXJ-S5/VI 系列开环霍尔电流传感器



功能要求/ Function

NAFC.XXXJ-S5/VI系列开环霍尔电流传感器具有精度高、体积小等特点。主要用于变频器等行业。

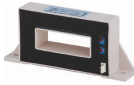
概况/ Product introduction

NAFC.XXXJ-S5/VI系列开环霍尔电流传感器适用于对交流、直流、脉冲电流的精确测量。测量时一次侧与二次侧均完全绝缘。

性能要求/ Product performance

Table with 2 columns: Item No. and Main parameters / Electrical characteristics. Lists primary current, accuracy, and other technical specifications.

NA CF.XXXJ1-S5/V 系列开环霍尔电流传感器



功能要求 / Function

NA CF.XXXJ1-S5/V系列开环霍尔电流传感器具有精度高、体积小等特点...

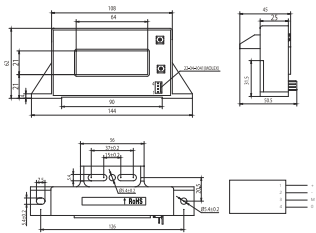
概况 / Product Introduction

NA CF.XXXJ1-S5/V系列开环霍尔电流传感器适用于交流、直流、脉冲电流的高精度检测...

性能要求 / Product performance

Table with 5 columns: Item No., Item Name, Main Parameters / Electrical Characteristics, and 4 sub-columns for different models.

安装示意图 / Dimensions (in mm)



NA CF.XXXJ1-S5/V Series 电气连接图 Connection

Table with 5 columns: Item No., Item Name, Main Parameters / Electrical Characteristics, and 4 sub-columns for different models.

NA CF.XXXP1-S5/V 系列分体式开环霍尔电流传感器



功能要求 / Function

NA CF.XXXP1-S5/V系列的传感器具有体积小、精度高等特点...

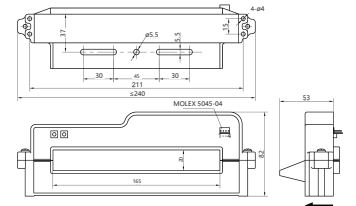
概况 / Product Introduction

NA CF.XXXP1-S5/V系列分体式开环霍尔电流传感器适用于交流、直流、脉冲电流的高精度检测...

性能要求 / Product performance

Table with 5 columns: Item No., Item Name, Main Parameters / Electrical Characteristics, and 4 sub-columns for different models.

安装示意图 / Dimensions (in mm)



NA CF.XXXP1-S5/V Series 电气连接图 Connection

Table with 5 columns: Item No., Item Name, Main Parameters / Electrical Characteristics, and 4 sub-columns for different models.

NA CF.3000S-S5/SP1V 系列分体式开环霍尔电流传感器



功能要求 / Function

NA CF.3000S-S5/SP1V系列分体式开环霍尔电流传感器具有精度高、线性度高等特点...

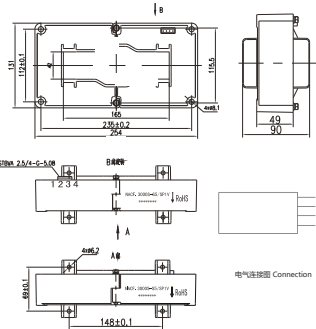
概况 / Product Introduction

NA CF.3000S-S5/SP1V系列分体式开环霍尔电流传感器适用于交流、直流、脉冲电流的高精度检测...

性能要求 / Product performance

Table with 5 columns: Item No., Item Name, Main Parameters / Electrical Characteristics, and 4 sub-columns for different models.

安装示意图 / Dimensions (in mm)



电气连接图 Connection

Table with 5 columns: Item No., Item Name, Main Parameters / Electrical Characteristics, and 4 sub-columns for different models.

NA CF.XXXT7-P6VN 系列电流传感器



功能要求 / Function

NA CF.XXXT7-P6VN系列电流传感器具有高精度、体积小等特点...

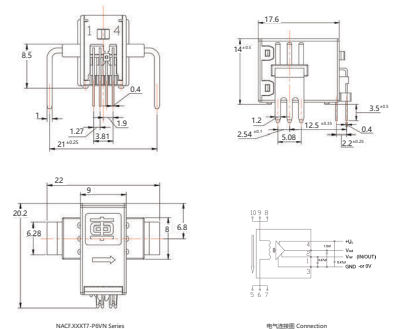
概况 / Product Introduction

NA CF.XXXT7-P6VN系列电流传感器适用于交流、直流、脉冲电流的高精度检测...

性能要求 / Product performance

Table with 5 columns: Item No., Item Name, Main Parameters / Electrical Characteristics, and 4 sub-columns for different models.

安装示意图 / Dimensions (in mm)



NA CF.XXXT7-P6VN Series 电气连接图 Connection

Table with 5 columns: Item No., Item Name, Main Parameters / Electrical Characteristics, and 4 sub-columns for different models.

NACA.XXXL-S6/SP2VA

系列汽车级电流传感器
Automotive current transducer



功能要求 / Function

NACA.XXXL-S6/SP2VA系列电流传感器具有体积小、高精度等特点。应用于新能源汽车的控制系统检测。

The transducer has the characteristics of High-linearity, Small size and space savings. It is suitable for the drive and control system of new energy vehicles.

概况 / Product introduction

NACA.XXXL-S6/SP2VA系列汽车级电流传感器适用于对交流、直流、脉冲电流的高精度测量。测量时一次侧与二次侧间完全绝缘。

For the electronic measurement of currents: AC, DC, pulsed..., with galvanic separation between the primary circuits and the secondary circuits.

性能要求 / Product performance

序号 / No.	项目 / Item	G (mV/A)	型号 / Model	G (mV/A)
1	NACA.XXXL-S6/SP2VA	10	NACA.XXXL-S6/SP2VA	0.7
2	NACA.XXXL-S6/SP2VA	5	NACA.XXXL-S6/SP2VA	4
3	NACA.XXXL-S6/SP2VA	1.33	NACA.XXXL-S6/SP2VA	2.86
4	NACA.XXXL-S6/SP2VA	2.5	NACA.XXXL-S6/SP2VA	2.22

序号 / No.	项目名称 / Item Name	主要参数 / Electrical characteristics
1	额定测量电流 / Primary nominal current	200A 300A 400A 500A 600A 700A 800A 900A
2	测量范围 / Primary current measuring range	±200A ±300A ±400A ±500A ±600A ±700A ±800A ±900A
3	额定输出电流 / Output current	±2.5V/20V
4	电源电压 / Supply voltage	5.0 ± 0.5Vdc
5	基本误差 / Accuracy(excluding offset)	±1% (0-25°C, 200A-1000A); ±1.2% (0-25°C, 0-200A)
6	零位输出误差 / Electrical offset	±2.5mV/15mV
7	线性度误差 / Linearity error	±1% (0-25°C, 200A-1000A); ±2% (0-25°C, 0-200A)
8	零位温度系数 / Temperature coefficient of ZO	±0.5mV/°C (-40°C ~ 125°C)
9	响应时间 / Step response time to 90% of FN	5μs (Typical), 7μs (Max)
10	功耗 / Current consumption	±15mA (额定工作电压)

NACA.800P1-S6/VA

两通道集成式汽车电流传感器
2 channel integrated current transducer for automotive



功能要求 / Function

NACA.800P1-S6/VA系列电流传感器具有高精度、线性度好等特点。应用于新能源汽车的控制系统检测。

The transducer has the characteristics of High-linearity, High-accuracy. Applied to the control system of new energy vehicles.

概况 / Product introduction

NACA.800P1-S6/VA系列汽车级电流传感器适用于对交流、直流、脉冲电流的高精度测量。测量时一次侧与二次侧间完全绝缘。

For the electronic measurement of currents: AC, DC, pulsed..., with galvanic separation between the primary circuits and the secondary circuits.

性能要求 / Product performance

序号 / No.	项目名称 / Item Name	主要参数 / Electrical characteristics
1	额定测量电流 / Primary nominal current	800A
2	测量范围 / Primary current measuring range	±800A
3	电源电压 / Supply voltage	5.0 ± 0.5Vdc
4	额定输出电流 / Output current	±2.5V/20V
5	基本误差 / Accuracy(excluding offset)	±1% (0-25°C, 0-200A)
6	零位输出误差 / Electrical offset	±VC (±10.015)
7	线性度误差 / Linearity error	±1% (0-25°C, 0-100A)
8	零位温度系数 / Temperature coefficient of ZO	±0.05mV/°C (-40°C ~ 125°C)
9	响应时间 / Step response time to 90% of FN	±7μs
10	额定AC-3dB / Frequency bandwidth	DC ~ 30kHz
11	负载电阻 / Load resistance	≥10kΩ
12	功耗 / Current consumption	±20mA - VSW, RL
13	绝缘电阻 / Isolation resistance	≥20 MΩ(50%RH)
14	爬电距离 / Voltage for AC insulation test	20/50mm/1min
15	工作温度 / Ambient operating temperature	-40 ~ 125°C
16	储存温度 / Ambient storage temperature	-40 ~ 125°C
17	重量 / Weight	±120g

NACA.XXXM-S5/SP2VA

系列汽车级电流传感器
Automotive current transducer



功能要求 / Function

NACA.XXXM-S5/SP2VA系列电流传感器具有体积小、高精度等特点。应用于新能源汽车的控制系统检测。

The transducer has the characteristics of High-linearity, Small size and space savings. It is suitable for the drive and control system of new energy vehicles.

概况 / Product introduction

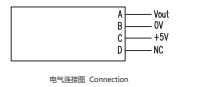
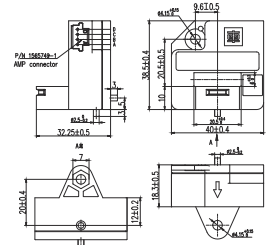
NACA.XXXM-S5/SP2VA系列汽车级电流传感器适用于对交流、直流和脉冲电流进行测量。

NACA.XXXM-S5/SP2VA current transducer is applicable for electronic measurement of AC, DC and pulsed currents, with galvanic separation between the primary circuits and the secondary circuits.

性能要求 / Product performance

序号 / No.	项目名称 / Item Name	主要参数 / Electrical characteristics
1	额定测量电流 / Primary nominal current	200 300 400 500 600 700 800 900 1000 1200 1400
2	测量范围 / Primary current measuring range	±200A ±300A ±400A ±500A ±600A ±700A ±800A ±900A ±1000A ±1200A ±1400A
3	电源电压 / Supply voltage	5.0 ± 0.5Vdc
4	额定输出电流 / Output current	VC(±2.5)±0.01
5	基本误差 / Accuracy(excluding offset)	±1% (0-25°C, ±200A ~ 1000A)
6	零位输出误差 / Electrical offset	±10mV (0-25°C, 25V)
7	线性度误差 / Linearity error	±0.5% (0-25°C, 0-100A)
8	零位温度系数 / Temperature coefficient of ZO	±0.5mV/°C (-40°C ~ 125°C)
9	响应时间 / Step response time to 90% of FN	±7μs
10	额定AC-3dB / Frequency bandwidth	DC ~ 30kHz
11	负载电阻 / Load resistance	≥20 MΩ(50%RH)
12	爬电距离 / Voltage for AC insulation test	20/50mm/1min
13	工作温度 / Ambient operating temperature	-40 ~ 125°C
14	储存温度 / Ambient storage temperature	-40 ~ 125°C
15	重量 / Weight	±15g

安装示意图 / Dimensions (in mm)



安装接口要求 / Mechanical characteristics

1	推荐安装方式 / Recommended fastening	2 hole ø1.5mm x 5M steel screws
2	推荐力矩 / Recommended torque	2.5 Nm
3	PC孔 / Center hole	20.5 mm-6mm
4	次级电气连接 / Electrical connection of secondary circuit	AMP 1561749-1 AMP 1473602-1

NACA.800Q-S6/VA

三通道集成式汽车电流传感器
3 channel integrated current transducer for automotive



功能要求 / Function

NACA.800Q-S6/VA系列电流传感器具有高精度、线性度好等特点。应用于新能源汽车的控制系统检测。

The transducer has the characteristics of High-linearity, High-accuracy. Applied to the control system of new energy vehicles.

概况 / Product introduction

NACA.800Q-S6/VA系列汽车级电流传感器适用于对交流、直流、脉冲电流的高精度测量。测量时一次侧与二次侧间完全绝缘。

For the electronic measurement of currents: AC, DC, pulsed..., with galvanic separation between the primary circuits and the secondary circuits.

性能要求 / Product performance

序号 / No.	项目名称 / Item Name	主要参数 / Electrical characteristics
1	额定测量电流 / Primary nominal current	800A
2	测量范围 / Primary current measuring range	±800A
3	电源电压 / Supply voltage	5.0 ± 0.5Vdc
4	额定输出电流 / Output current	±2.5V/20V
5	基本误差 / Accuracy(excluding offset)	±1% (0-25°C, 0-200A)
6	零位输出误差 / Electrical offset	±VC (±10.015)
7	线性度误差 / Linearity error	±1% (0-25°C, 0-100A)
8	零位温度系数 / Temperature coefficient of ZO	±0.05mV/°C (-40°C ~ 125°C)
9	响应时间 / Step response time to 90% of FN	±7μs
10	额定AC-3dB / Frequency bandwidth	DC ~ 30kHz
11	负载电阻 / Load resistance	≥10kΩ
12	功耗 / Current consumption	±20mA - VSW, RL
13	绝缘电阻 / Isolation resistance	≥20 MΩ(50%RH)
14	爬电距离 / Voltage for AC insulation test	20/50mm/1min
15	工作温度 / Ambient operating temperature	-40 ~ 125°C
16	储存温度 / Ambient storage temperature	-40 ~ 125°C
17	重量 / Weight	±120g

NACA.800Q-S6/VA

三通道集成式汽车电流传感器
3 channel integrated current transducer for automotive



功能要求 / Function

NACA.800Q-S6/VA系列电流传感器具有高精度、线性度好等特点。应用于新能源汽车的控制系统检测。

The transducer has the characteristics of High-linearity, High-accuracy. Applied to the control system of new energy vehicles.

概况 / Product introduction

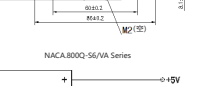
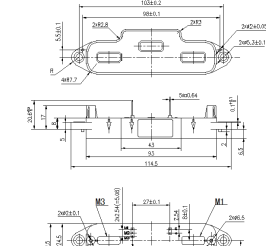
NACA.800Q-S6/VA系列汽车级电流传感器适用于对交流、直流和脉冲电流进行测量。产品能满足汽车级电流传感器的相关标准和需求。

NACA.800Q-S6/VA current transducer is applicable for electronic measurement of AC, DC and pulsed currents, with galvanic separation between the primary circuits and the secondary circuits.

性能要求 / Product performance

序号 / No.	项目名称 / Item Name	主要参数 / Electrical characteristics
1	额定测量电流 / Primary nominal current	800A
2	测量范围 / Primary current measuring range	±800A
3	电源电压 / Supply voltage	5.0 ± 0.5Vdc
4	额定输出电流 / Output current	±2.5V/20V
5	基本误差 / Accuracy(excluding offset)	±1% (0-25°C, 0-200A)
6	零位输出误差 / Electrical offset	±2.5mV/15mV (0-25°C)
7	线性度误差 / Linearity error	±0.5% (0-25°C, 0-100A)
8	零位温度系数 / Temperature coefficient of ZO	±0.05mV/°C (-40°C ~ 125°C)
9	响应时间 / Step response time to 90% of FN	±7μs
10	额定AC-3dB / Frequency bandwidth	DC ~ 30kHz
11	负载电阻 / Load resistance	≥10kΩ
12	功耗 / Current consumption	±15mA - VSW, RL
13	绝缘电阻 / Isolation resistance	≥20 MΩ(50%RH)
14	爬电距离 / Voltage for AC insulation test	20/50mm/1min
15	工作温度 / Ambient operating temperature	-40 ~ 125°C
16	储存温度 / Ambient storage temperature	-40 ~ 125°C
17	重量 / Weight	±100g

安装示意图 / Dimensions (in mm)



安装接口要求 / Mechanical characteristics

1	推荐安装方式 / Recommended fastening	2 hole ø1.5mm, 2 M5 steel screws
2	推荐力矩 / Recommended fastening torque	6 Nm
3	次级电气连接 / Connection of secondary	Pin 2-2.54 Pin 2-2.54 new soldering

NACA.XXXB-S5/VA 系列高精度双量程汽车级电流传感器

Dual channel automotive current transducer



功能要求 / Function

NACA.XXXB-S5/VA系列高精度双量程汽车级电流传感器具有体积小、高精度等特点...

概况 / Product introduction

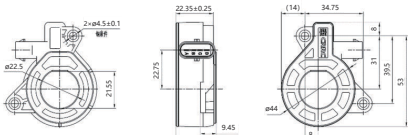
NACA.XXXB-S5/VA系列高精度双量程汽车级电流传感器系列适用于直流、交流和脉动电流的精确测量...

性能要求 / Product performance

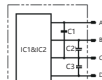
Table with 7 columns: No., Parameter, Symbol, Unit, Min, Type, Max, Conditions. Lists operating characteristics like supply voltage, output current, and load resistance.

Table with 7 columns: No., Parameter, Symbol, Unit, Min, Type, Max, Conditions. Lists performance data for channel 1 including primary current, calibration current, and internal resistance.

安装示意图 / Dimensions (in mm)



NACA.XXXB-S5/VA Series



电气连接图 Connection

Table with 7 columns: No., Parameter, Symbol, Unit, Min, Type, Max, Conditions. Lists performance data for channel 1 including primary current, calibration current, and internal resistance.

通道1 性能指标 / Performance Data channel 1

Table with 7 columns: No., Parameter, Symbol, Unit, Min, Type, Max, Conditions. Lists performance data for channel 2 including primary current, calibration current, and internal resistance.

通道2 性能指标 / Performance Data channel 2

Table with 7 columns: No., Parameter, Symbol, Unit, Min, Type, Max, Conditions. Lists performance data for channel 2 including primary current, calibration current, and internal resistance.

Table with 7 columns: No., Parameter, Symbol, Unit, Min, Type, Max, Conditions. Lists performance data for channel 1 including primary current, calibration current, and internal resistance.

Table with 7 columns: No., Parameter, Symbol, Unit, Min, Type, Max, Conditions. Lists performance data for channel 1 including primary current, calibration current, and internal resistance.

通道1 性能指标 / Performance Data channel 1

Table with 7 columns: No., Parameter, Symbol, Unit, Min, Type, Max, Conditions. Lists performance data for channel 2 including primary current, calibration current, and internal resistance.

Table with 7 columns: No., Parameter, Symbol, Unit, Min, Type, Max, Conditions. Lists performance data for channel 2 including primary current, calibration current, and internal resistance.

NACA.XXX-S5/VA 系列高精度双量程汽车级电流传感器

Dual channel automotive current transducer



功能要求 / Function

NACA.XXX-S5/VA系列高精度双量程汽车级电流传感器具有体积小、高精度等特点...

概况 / Product introduction

NACA.XXX-S5/VA系列高精度双量程汽车级电流传感器系列适用于直流、交流和脉动电流的精确测量...

性能要求 / Product performance

Table with 7 columns: No., Parameter, Symbol, Unit, Min, Type, Max, Conditions. Lists operating characteristics like supply voltage, output current, and load resistance.

Table with 7 columns: No., Parameter, Symbol, Unit, Min, Type, Max, Conditions. Lists performance data for channel 1 including primary current, calibration current, and internal resistance.

通道1 性能指标 / Performance Data channel 1

Table with 7 columns: No., Parameter, Symbol, Unit, Min, Type, Max, Conditions. Lists performance data for channel 2 including primary current, calibration current, and internal resistance.

Table with 7 columns: No., Parameter, Symbol, Unit, Min, Type, Max, Conditions. Lists performance data for channel 2 including primary current, calibration current, and internal resistance.

通道2 性能指标 / Performance Data channel 2

Table with 7 columns: 序号 No., 参数 Parameter, 符号 Symbol, 单位 Unit, 测量范围 / Specification (Min, Max, Type), 备注 Conditions. Contains performance data for channel 2.

通道1性能指标 / Performance index of channel 1

Table with 7 columns: 序号 No., 参数 Parameter, 符号 Symbol, 单位 Unit, 测量范围 / Specification (Min, Max, Type), 备注 Conditions. Contains performance index data for channel 1.

通道2 性能指标 / Performance Data channel 2

Table with 7 columns: 序号 No., 参数 Parameter, 符号 Symbol, 单位 Unit, 测量范围 / Specification (Min, Max, Type), 备注 Conditions. Contains performance data for channel 2.

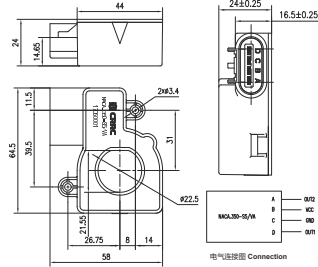
通道1性能指标 / Performance Data channel 1

Table with 7 columns: 序号 No., 参数 Parameter, 符号 Symbol, 单位 Unit, 测量范围 / Specification (Min, Max, Type), 备注 Conditions. Contains performance index data for channel 1.

通道2 性能指标 / Performance Data channel 2

Table with 7 columns: 序号 No., 参数 Parameter, 符号 Symbol, 单位 Unit, 测量范围 / Specification (Min, Max, Type), 备注 Conditions. Contains performance data for channel 2.

安装示意图 / Dimensions (in mm)



通道2 性能指标 / Performance Data channel 2

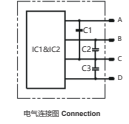


Table with 3 columns: 序号 No., 引脚输出 / Pin out, 接口定义 / Pin definition. Lists pin definitions for channels 1 and 2.

Table with 3 columns: 序号 No., 安装接口要求 / Mechanical characteristics, 接口定义 / Pin definition. Lists mechanical and electrical requirements.

NACGLXXX-S1/V 系列直流漏电流传感器



功能要求 / Function

NACGLXXX-S1/V系列电流传感器具有高精度、高线性度、高灵敏度、体积小、结构紧凑等特点...

概况 / Product introduction

NACGLXXX-S1/V系列电流传感器适用于对直流、脉冲电流的高精度检测, 测量时一次侧与二次侧完全绝缘...

性能要求 / Product performance

Table with 7 columns: 序号 No., 项目参数 Item, 主要参数 / Electrical characteristics (NACGL 0.1-51/V, NACGL 0.2-51/V, NACGL 2-51/V, NACGL 10-51/V), 备注 Conditions.

NACGLXX-P6/VN 系列磁通门式微电流测量传感器



功能要求 / Function

NACGL系列电流传感器具有高精度、高线性度、高灵敏度、体积小、结构紧凑等特点...

概况 / Product introduction

该电流传感器适用于对TYPE B类短路电流检测, 对直流和脉冲电流均具有高精度检测...

性能要求 / Product performance

Table with 7 columns: 序号 No., 项目参数 Item, 主要参数 / Electrical characteristics (NACGL 0.3-P6/VN, NACGL 0.5-P6/SP2VN, NACGL 0.3-P6/SP1VN, NACGL 0.5-P6/SP2VN, NACGL 1-P6/SP1VN, NACGL 1.5-P6/VN), 备注 Conditions.

NACGLXXX-P6/VN 系列磁通门式微电流测量传感器

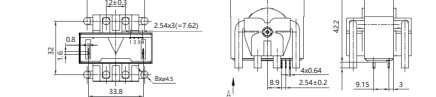


Table with 3 columns: 序号 No., 安装接口要求 / Mechanical characteristics, 接口定义 / Pin definition. Lists mechanical and electrical requirements.

Table with 3 columns: 序号 No., 安装接口要求 / Mechanical characteristics, 接口定义 / Pin definition. Lists mechanical and electrical requirements.

NACGL.XXX-S5/N
系列超高精度电流传感器
Ultra-high precision current transducer



功能要求 / Function

NACGL.XXX-S5/N 电流传感器具有高精度、高性价比、低温度等特点。应用于交流变频器、私服电机驱动、电源供电、变频器/逆变器、UPS 等行业电气设备的系统控制及检测。

The transducer has the characteristics of High-accuracy/Low temperature of drift and High-linearity. It is suitable for system control and detection such as variable frequency drive, inverter supplied applications, Converter/ Inverter, uninterruptible power supplies (UPS) and other industrial fields.

概况 / Product Introduction

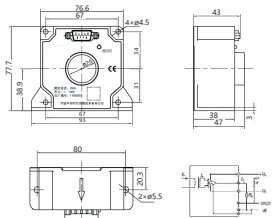
NACGL.XXX-S5/N 系列电流传感器适用于对交流、直流、脉冲电流的高精度检测。测量时一次侧与二次侧间完全绝缘。

For the electronic measurement of currents: AC, DC, pulsed..., with galvanic separation between the primary circuits and the secondary circuits.

性能要求 / Product performance

序号 No.	项目描述 Item	主要参数 / Electrical characteristics	
		NACGL200-S5/N	NACGL400-S5/N
1	额定测量电流 / Primary nominal current	200A	400A
2	测量范围 / Primary current measuring range	0-200A	0-400A
3	电源电压 / Supply voltage	DC 24V (1.5-30V)	
4	额定测量精度 / Output current	200mA	
5	精度比 K / Turn ratio	1:500	1:200
6	基本误差 / Accuracy (including offset)	±1.50%	
7	零点温度漂移 / Zero-point offset	±1.50%	
8	线性度误差 / Linearity error	±10ppm	
9	零点温度漂移 / Temperature coefficient of Is	±2ppm/°C	
10	响应时间 / Step response time to 90 % of Is	4µs	
11	功耗 / Current consumption	≤1.50mA@24V	
12	负载电阻 / Load resistance	60-300	
13	带宽 (3dB) / Frequency bandwidth	(1-80) 150kHz / (1-80) 500kHz	
14	耐压 / Voltage for AC insulation test	5kV	
15	工作温度 / Ambient operating temperature	-40~+85°C	
16	储存温度 / Ambient storage temperature	-40~+95°C	
17	重量 / Weight	≤300g	

安装示意图 / Dimensions (in mm)



NACGL.XXX-S5/N Series 电气连接图 Connection

安装接口要求 / Mechanical characteristics

序号 No.	安装接口要求 / Mechanical characteristics	主要参数 / Electrical characteristics
1	物理安装方式 / Transducer fastening	2 hole ± 5.5mm, 2#5 steel screws
2	物理安装力矩 / Primary fastening torque	4 N.m@±5, 4#M steel screws
3	推荐力矩 / Recommended fastening torque	2.5 N.m
4	穿线 / Primary through-hole	160±20mm
5	次侧电气连接 / Connection of secondary	9 pin D-Sub

NACGL2000-S1/R
超高精度电流传感器
Ultra-high precision current transducer



功能要求 / Function

NACGL2000-S1/R 电流传感器具有高精度、高性价比、低温度等特点。应用于交流变频器、伺服电机驱动、变频器/逆变器、UPS 等行业电气设备的系统控制及检测。

The transducer has the characteristics of High-accuracy/Low temperature of drift and High-linearity. It is suitable for system control and detection such as variable frequency drive, Converter/ Inverter, uninterruptible power supplies (UPS) and other industrial fields.

概况 / Product Introduction

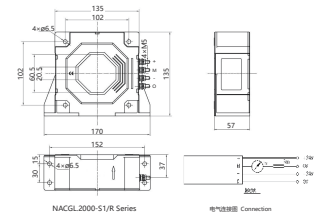
NACGL2000-S1/R 电流传感器适用于对交流、直流、脉冲电流的高精度检测。测量时一次侧与二次侧间完全绝缘。

For the electronic measurement of currents: AC, DC, pulsed..., with galvanic separation between the primary circuits and the secondary circuits.

性能要求 / Product performance

序号 No.	项目描述 / Item	主要参数 / Electrical characteristics
1	额定测量电流 / Primary nominal current	2000A
2	测量范围 / Primary current measuring range	0 - 2400A
3	电源电压 / Supply voltage	±24 (1.5-30V)
4	额定测量精度 / Output current	400mA
5	精度比 K / Turn ratio	±100ppm (0 + 23°C) ±1100ppm (0 - 85°C)
6	基本误差 / Accuracy (including offset)	±1.00% (0 + 23°C) ±1.10% (0 - 100°C - 60°C) ±1.00% (0 - 40°C - 85°C)
7	零点温度漂移 / Linearity error	±1µm (0-40V + 100A/40V)
8	响应时间 / Step response time to 90 % of Is	±200ns (0-24V) + 调整延迟时间 5N
9	功耗 / Current consumption	1.500W
10	负载电阻 / Load resistance	200Ω (0-340, 100A)
11	绝缘电阻 / Isolation resistance	≥500 MΩ@2300V
12	耐压 / Voltage for AC insulation test	11.5kV/50Hz/1min
13	工作温度 / Ambient operating temperature	-40°C - +85°C
14	储存温度 / Ambient storage temperature	-45°C - +90°C
15	重量 / Weight	±1700g

安装示意图 / Dimensions (in mm)



NACGL2000-S1/R Series 电气连接图 Connection

安装接口要求 / Mechanical characteristics

序号 No.	安装接口要求 / Mechanical characteristics	主要参数 / Electrical characteristics
1	物理安装方式 / Transducer fastening	4 hole ± 6mm, 4#5 steel screws
2	推荐力矩 / Recommended torque	4.5±0.2 N.m
3	穿线 / Center hole	±60.5mm
4	次侧电气连接 / Electrical connection of secondary circuit	red with 6pin, 20x10.7mm

NACF.20U-S5/D
16通道光伏电流检测单元
16 channels current detection unit for PV



功能要求 / Function

NACF.20U-S5-D 电流传感器体积小，应用于光伏行业的光电检测系统。

The transducer has the characteristics of small size and space savings. It is suitable for system control and detection such as photovoltaic and other industrial fields.

概况 / Product Introduction

NACF.20U-S5/D 开环霍尔电流传感器适用于对交流、直流、脉冲电流的高精度检测。测量时一次侧与二次侧间完全绝缘。

每个传感器可同时测量 16 路电流和电压信号，集成防反、母线电压、温度的参数测量并可通过数码管显示。通过 4-85 一路电

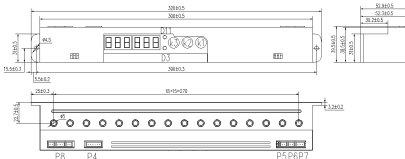
压实现信号传输。

For the electronic measurement of currents: AC, DC, pulsed..., with galvanic separation between the primary circuits and the secondary circuits, each sensor can measure 16 current and ac signals at the same time, integrated lightning protection, the parameters of busbar voltage, temperature, and through digital display through the RS485 data transmission, along the one-to-one signal output interface.

性能要求 / Product performance

序号 No.	项目描述 Item	主要参数 / Electrical characteristics	
		NACF20U-S5/D	NACF40U-S5/D
1	额定测量电流 / Primary nominal current	±20A	±20A
2	测量范围 / Primary current measuring range	±20A	±20A
3	额定测量精度 / Output current	±20A	
4	电源电压 / Supply voltage	5.3±1.3%VDC	
5	基本误差 / Accuracy (including offset)	±1.1%	
6	零点温度漂移 / Zero-point offset	±10.1A	
7	线性度误差 / Linearity error	±1.1%	
8	响应时间 / Step response time to 90 % of Is	<3µs	
9	功耗 / Current consumption	<1.600mA	
10	带宽 / Voltage for AC insulation test	3.5 kV/50Hz/1min	
11	工作温度 / Ambient operating temperature	-30~+85°C	
12	储存温度 / Ambient storage temperature	-40~+85°C	
13	重量 / Weight	<500g	

安装示意图 / Dimensions (in mm)



序号 No.	安装接口要求 / Mechanical characteristics	主要参数 / Electrical characteristics
1	物理安装方式 / Transducer fastening	1 hole ±6mm, 1.3MM steel screws
2	推荐力矩 / Recommended torque	0.8 N.m
3	穿线 / Primary through-hole	±5
4	次侧电气连接 / Electrical connection of secondary circuit	JST

NVCL.AWB-66
系列闭环霍尔电压传感器
Closed loop voltage transducer



功能要求 / Function

NVCL.AWB-66 系列闭环霍尔电压传感器适用于对交流、直流电压的高精度检测。测量时一次侧与二次侧间完全绝缘。

The transducer has the characteristics of High-accuracy/Low temperature of drift and High-linearity. It is suitable for system control and detection such as new energy variable frequency drive, Converter/ Inverter, uninterruptible power supplies (UPS) and other industrial fields.

概况 / Product Introduction

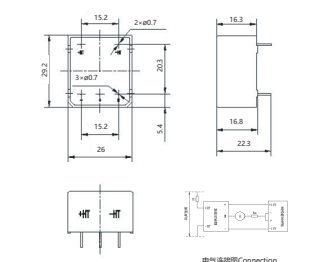
NVCL.AWB-66 系列闭环霍尔电压传感器适用于对交流、直流电压的高精度检测。测量时一次侧与二次侧间完全绝缘。

For the electronic measurement of voltages: AC, DC, pulsed..., with galvanic isolation between the primary (high power) and the secondary (low power) circuits.

性能要求 / Product performance

序号 No.	项目描述 Item	主要参数 / Electrical characteristics		
		NVCL.AWB-66	NVCL.AWB-66/2P	NVCL.AWB-66/2P2
1	额定测量电流 / Primary nominal current	10mA	10mA	25mA
2	测量范围 / Primary current measuring range	0 - 1.20mA	0 - 1.20mA	0 - 1.35mA
3	精度比 K / Turn ratio	2500/1000	3100/1000	1000/1000
4	电源电压 / Supply voltage	±15 (1.5-15) V		
5	额定测量精度 / Output current	25mA		25mA
6	基本误差 / Accuracy (including offset)	±0.8%	±1mA	25mA
7	零点温度漂移 / Zero-point offset	±0.15mA (0-23°C)		
8	线性度误差 / Linearity error	±0.2%		
9	零点温度漂移 / Temperature coefficient of Is	(-25°C - 85°C) ±0.50mA, (-40°C - 85°C) ±0.80mA		
10	响应时间 / Step response time to 90 % of Is	40µs		
11	功耗 / Current consumption	±10mA@10N		
12	绝缘电阻 / Isolation resistance	≥500 MΩ@2300V		
13	耐压 / Voltage for AC insulation test	4.2kV/50Hz/1min		
14	工作温度 / Ambient operating temperature	-40°C - +85°C		
15	储存温度 / Ambient storage temperature	-55°C - +90°C		
16	重量 / Weight	≤21g		

安装示意图 / Dimensions (in mm)



电气连接图 Connection

安装接口要求 / Mechanical characteristics

序号 No.	安装接口要求 / Mechanical characteristics	主要参数 / Electrical characteristics
1	物理安装方式 / Transducer fastening	电气连接图安装 www.solidring.com

NVCL.XXXD-22 系列闭环电压传感器



功能要求 / Function

NVCL.XXXD-22系列电压传感器具有高精度、低误差、高线性度、体积小、无输入漂移、过负载能力强等特点...

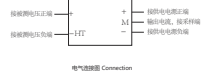
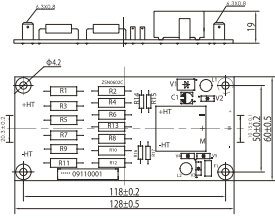
概况 / Product introduction

NVCL.XXXD-22系列闭环电压传感器适用于交流、直流和脉冲电压的精确测量、测量时一次侧与二次侧之间完全绝缘。

性能要求 / Product performance

Table with 3 columns: 序号/Item No., 项目/Item, 主要参数/Electrical characteristics. Lists technical specifications for the NVCL.XXXD-22 transducer.

安装示意图 / Dimensions (in mm)



安装接口要求 / Mechanical characteristics

Table with 3 columns: 序号/Item No., 项目/Item, 主要参数/Electrical characteristics. Lists mechanical requirements for the NVCL.XXXD-22 transducer.

NVCL.XXXC1 系列闭环电压传感器



功能要求 / Function

NVCL.XXXC1系列电压传感器具有高精度、线性度好、低误差、过负载能力强等特点...

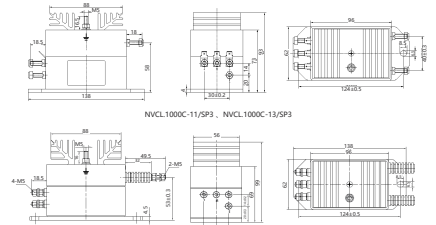
概况 / Product introduction

NVCL.XXXC1系列闭环电压传感器适用于交流、直流和脉冲电压的精确测量、控制。

性能要求 / Product performance

Table with 3 columns: 序号/Item No., 项目/Item, 主要参数/Electrical characteristics. Lists technical specifications for the NVCL.XXXC1 transducer.

安装示意图 / Dimensions (in mm)



NVCL400C-11

电气连接图 Connection

安装接口要求 / Mechanical characteristics

Table with 3 columns: 序号/Item No., 项目/Item, 主要参数/Electrical characteristics. Lists mechanical requirements for the NVCL.XXXC1 transducer.

NVCT.XXX-13 系列磁调制式电压传感器



功能要求 / Function

NVCT.XXX-13系列电压传感器具有高精度、高线性度、低误差、过负载能力强等特点...

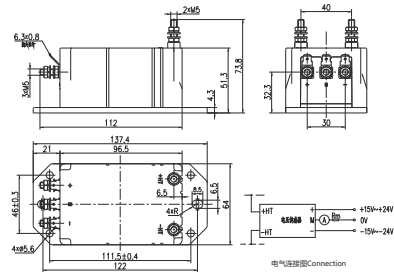
概况 / Product introduction

NVCT.XXX-13系列磁调制式电压传感器适用于交流、直流和脉冲电压的精确测量、测量时一次侧与二次侧之间完全绝缘。

性能要求 / Product performance

Table with 3 columns: 序号/Item No., 项目/Item, 主要参数/Electrical characteristics. Lists technical specifications for the NVCT.XXX-13 transducer.

安装示意图 / Dimensions (in mm)



安装接口要求 / Mechanical characteristics

Table with 3 columns: 序号/Item No., 项目/Item, 主要参数/Electrical characteristics. Lists mechanical requirements for the NVCT.XXX-13 transducer.

NVAF.XXX-13 系列隔离放大电压传感器



功能要求 / Function

NVAF.XXX-13系列电压传感器具有高精度、高线性度、低误差、过负载能力强等特点...

概况 / Product introduction

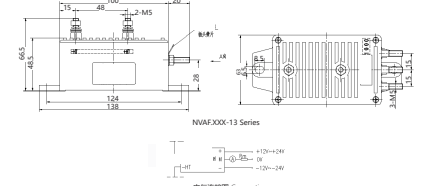
NVAF.XXX-13系列隔离放大电压传感器适用于交流、直流和脉冲电压的精确测量、测量时一次侧与二次侧之间完全绝缘。

性能要求 / Product performance

Table with 3 columns: 序号/Item No., 项目/Item, 主要参数/Electrical characteristics. Lists technical specifications for the NVAF.XXX-13 transducer.

Table with 3 columns: 序号/Item No., 项目/Item, 主要参数/Electrical characteristics. Lists technical specifications for the NVAF.XXX-13 transducer.

安装示意图 / Dimensions (in mm)



安装接口要求 / Mechanical characteristics

Table with 3 columns: 序号/Item No., 项目/Item, 主要参数/Electrical characteristics. Lists mechanical requirements for the NVAF.XXX-13 transducer.

NVCT.3000-11/R 1

磁调制电压传感器
Magnetic modulation technology voltage transducer



功能要求 / Function

NVCT.3000-11/R 1 系列电压传感器具有高精度、线性好、低温漂、反应时间快、电流过载能力强、抗外界干扰能力强等特点。应用于新能源、交流变频器、交流励磁/逆变器、UPS 等行业电气设备的系统控制及检测。

The transducer has the characteristics of High-accuracy, Low temperature of drift, Optimized response time and High-linearity. It is suitable for system control and detection such as new energy, variable frequency drive, Converter (inverter), uninterruptible power supplies (UPS) and other industrial fields.

概况 / Product introduction

NVCT.3000-11/R 1 系列电压传感器适用于对交流、直流和脉冲电压的高精度检测。测量时一次侧与二次侧之间完全绝缘。

For the electronic measurement of voltage: AC, pulsed... with galvanic isolation between the primary (high power) and the secondary (electronic) circuits.

性能要求 / Product performance

序号 / No.	项目名称 / Item	主要参数 / Electrical characteristics
1	额定测量电压 / Primary nominal voltage	3000V
2	测量范围 / Primary current measuring range	0 ~ 13500V
3	电源电压 / Supply voltage	±15% ~ ±24% (15V/24V)
4	额定输出电流 / Output current	50mA
5	基本误差 / Accuracy (including offset)	±0.1% (0~23°C)
6	零位输出漂移 / Electrical offset	±0.2mA max. (0~23°C)
7	线性度误差 / Linearity error	±0.1%
8	零位温度漂移 / Temperature coefficient of ISD	±0.2mA (0~23°C, ±40°C)
9	响应时间 / Step response time to 95% of FN	±50μs (0V/0A ~ 100V/10A)
10	功耗 / Power consumption	≤50mA @ 50V
11	绝缘电阻 / Isolation resistance	500 MΩ
12	耐压 / Voltage for AC insulation test	11.5kV/50Hz/1min
13	工作温度 / Ambient operating temperature	-40°C ~ +85°C
14	贮存温度 / Ambient storage temperature	-45°C ~ +90°C
15	重量 / Weight	±800g

NVDL.1000-11

型数字化高精度电压传感器
Digital high precision voltage transducer

功能要求 / Function

NVDL.1000-11 系列电压传感器具有高精度、高线性度、低温漂、体积小、宽频带等特点。应用于新能源、交流变频器、交流励磁/逆变器、UPS 等行业电气设备的系统控制及检测。

The transducer has the characteristics of High-accuracy, Low temperature of drift, High-linearity and Small size. It is suitable for system control and detection such as new energy, variable frequency drive, Converter (inverter), uninterruptible power supplies (UPS) and other industrial fields.

概况 / Product introduction

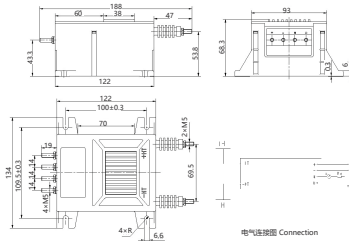
NVDL.1000-11 系列电压传感器适用于对交流、直流和脉冲电压的高精度检测。测量时一次侧与二次侧之间完全绝缘。

For the electronic measurement of voltage: AC, pulsed... with galvanic isolation between the primary (high power) and the secondary (electronic) circuits.

性能要求 / Product performance

序号 / No.	项目名称 / Item	主要参数 / Electrical characteristics
1	额定测量电压 / Primary nominal voltage	1000V
2	测量范围 / Primary current measuring range	0 ~ 13500V
3	电源电压 / Supply voltage	±15% ~ ±24% (15V/24V)
4	额定输出电流 / Output current	50mA
5	基本误差 / Accuracy (including offset)	±0.05% (0~23°C)
6	零位输出漂移 / Electrical offset	±0.05mA
7	精度误差 / Linearity error	±0.5% (0~23°C)
8	零位温度漂移 / Temperature coefficient of ISD	±0.05mA (0~23°C, ±40°C)
9	响应时间 / Step response time to 95% of FN	±50μs
10	带宽 / Bandwidth / Frequency bandwidth (3dB)	DC-14kHz
11	功耗 / Power consumption	≤20mA Secondary output current 12V
12	耐压 / Voltage for AC insulation test	8.5kV/50Hz/1min
13	工作温度 / Ambient operating temperature	-40°C ~ +85°C
14	贮存温度 / Ambient storage temperature	-45°C ~ +90°C
15	重量 / Weight	±300g

安装示意图 / Dimensions (in mm)



电气连接图 Connection

安装接口要求 / Mechanical characteristics

序号 / No.	项目名称 / Item	主要参数 / Electrical characteristics
1	传感器安装方式 / Transducer fastening	4 hole 4.0mm, 4-M4 steel screws
2	紧固力矩 / Recommended fastening torque	4.5±0.2 Nm
3	电气连接 / Connection	at 65.5mm
4	紧固力矩 / Recommended fastening torque	not with slot, 2.0±0.1 Nm

NVRF.XXXXB-22-N

型电压传感器
Voltage transducer



功能要求 / Function

NVRF.XXXXB-22-N 系列电压传感器具有高精度、高线性度、低温漂、体积小、抗插入损耗、过载能力强等特点。应用于新能源、交流变频器、交流励磁/逆变器、UPS 等行业电气设备的系统控制及检测。

The transducer has the characteristics of High-accuracy, Low temperature of drift and High-linearity. It is suitable for system control and detection such as new energy, variable frequency drive, Converter (inverter), uninterruptible power supplies (UPS) and other industrial fields.

概况 / Product introduction

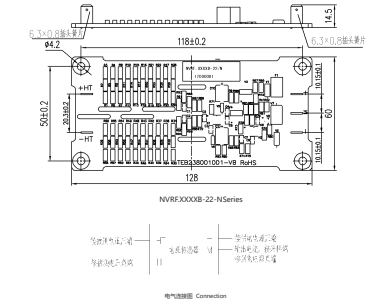
NVRF.XXXXB-22-N 系列电压传感器适用于对交流、直流和脉冲电压的高精度检测。测量时一次侧与二次侧之间完全绝缘。

For the electronic measurement of voltage: AC, pulsed... with galvanic isolation between the primary (high power) and the secondary (electronic) circuits.

性能要求 / Product performance

序号 / No.	项目名称 / Item	主要参数 / Electrical characteristics	
		NVRF.600B-22-1N	NVRF.1000B-22-1N
1	额定测量电压 / Primary nominal voltage	600V	1000V
2	测量范围 / Primary current measuring range	0 ~ 1900V	0 ~ 13500V
3	电源电压 / Supply voltage	± (12~15%) (12V/15V)	± (12~15%) (12V/15V)
4	额定输出电流 / Output current	25mA	25mA
5	基本误差 / Accuracy (including offset)	±0.8% (0~23°C, ±1V _{in})	±0.8% (0~23°C, ±1V _{in})
6	零位输出漂移 / Electrical offset	±0.15mA (0~23°C)	±0.15mA (0~23°C)
7	线性度误差 / Linearity error	±0.2%	±0.2%
8	零位温度漂移 / Temperature coefficient of ISD	±0.08mA (0~23°C, ±40°C)	±0.08mA (0~23°C, ±40°C)
9	响应时间 / Step response time to 95% of FN	±50μs (0V/0A ~ 100V/10A)	±50μs (0V/0A ~ 100V/10A)
10	功耗 / Power consumption	≤10mA @ 12V (0~15V, +23°C)	≤10mA @ 12V (0~15V, +23°C)
11	绝缘电阻 / Isolation resistance	7MΩ @ 2500V	7MΩ @ 2500V
12	耐压 / Voltage for AC insulation test	4.2kV/50Hz/1min	4.2kV/50Hz/1min
13	工作温度 / Ambient operating temperature	-40°C ~ +85°C	-40°C ~ +85°C
14	贮存温度 / Ambient storage temperature	-40°C ~ +85°C	-40°C ~ +85°C
15	重量 / Weight	±85g	±85g

安装示意图 / Dimensions (in mm)



电气连接图 Connection

安装接口要求 / Mechanical characteristics

序号 / No.	项目名称 / Item	主要参数 / Electrical characteristics
1	传感器安装方式 / Transducer fastening	4 hole 4.0mm, 4-M4 steel screws
2	紧固力矩 / Recommended fastening torque	4.5±0.2 Nm
3	电气连接 / Electrical connection of secondary circuit	3 Fasten 6.7±0.8mm

NVCT.XXXC-11/N

高压高精度电压传感器
High voltage & isolation voltage transducer



功能要求 / Function

NVCT.XXXC-11/N 系列电压传感器具有高精度、高线性度、低温漂、体积小、宽频带等特点。应用于新能源、交流变频器、交流励磁/逆变器、UPS 等行业电气设备的系统控制及检测。

The transducer has the characteristics of High-accuracy, Low temperature of drift, High-linearity and Small size. It is suitable for system control and detection such as new energy, variable frequency drive, Converter (inverter), uninterruptible power supplies (UPS) and other industrial fields.

概况 / Product introduction

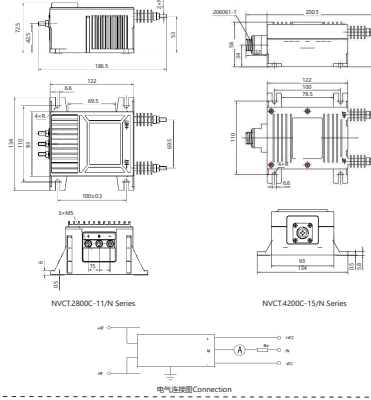
NVCT.XXXC-11/N 系列电压传感器适用于对交流、直流和脉冲电压的高精度检测。测量时一次侧与二次侧之间完全绝缘。

For the electronic measurement of voltage: AC, pulsed... with galvanic isolation between the primary (high power) and the secondary (electronic) circuits.

性能要求 / Product performance

序号 / No.	项目名称 / Item	主要参数 / Electrical characteristics	
		NVCT.2800C-11/N	NVCT.4200C-11/N
1	额定测量电压 / Primary nominal voltage	2800V	4200V 3000V
2	测量范围 / Primary current measuring range	0 ~ 4000V	0 ~ 6000V
3	电源电压 / Supply voltage	±15% ~ ±24% (15V/24V)	±15% ~ ±24% (15V/24V)
4	额定输出电流 / Output current	50mA	70mA (0V _{in} ~ 4200V) 50mA (0V _{in} ~ 3000V)
5	基本误差 / Accuracy (including offset)	±0.8% (0~23°C)	±0.8% (0~23°C)
6	零位输出漂移 / Electrical offset	±0.2mA (0~23°C)	±0.2mA (0~23°C)
7	线性度误差 / Linearity error	±0.1%	±0.1%
8	零位温度漂移 / Temperature coefficient of ISD	±0.05mA (0~23°C, ±40°C)	±0.05mA (0~23°C, ±40°C)
9	响应时间 / Step response time to 95% of FN	±50μs	±50μs
10	带宽 / Bandwidth / Frequency bandwidth (3dB)	DC-8kHz	DC-8kHz
11	功耗 / Power consumption	≤50mA @ 12V (0~12V, ±24V)	≤50mA @ 12V (0~12V, ±24V)
12	耐压 / Voltage for AC insulation test	8.5kV/50Hz/1min	8.5kV/50Hz/1min
13	工作温度 / Ambient operating temperature	-40°C ~ +85°C	-40°C ~ +85°C
14	贮存温度 / Ambient storage temperature	-45°C ~ +90°C	-45°C ~ +90°C
15	重量 / Weight	±800g	±800g

安装示意图 / Dimensions (in mm)



电气连接图 Connection

安装接口要求 / Mechanical characteristics

序号 / No.	项目名称 / Item	主要参数 / Electrical characteristics
1	传感器安装方式 / Transducer fastening	4 hole 4.0mm, 4-M4 steel screws
2	紧固力矩 / Recommended fastening torque	4.5±0.2 Nm
3	电气连接 / Connection	M5 steel screws 2.2mm±0.1 Nm

NVCT.1400D-11/VN

宽频带高精度电压传感器
Wide frequency bandwidth high precision voltage transducer



功能要求 / Function

NVCT.1400D-11/VN电压传感器具有精度高、线性好、低温度、反应时间短、电池过耗能力强、抗外界干扰能力强等特点。适用于新能源、交变变频器、交流马达变频器、UPS等行业的气动控制及检测。

The transducer has the characteristics of High-accuracy, Low temperature of drift, Optimized response time and High-linearity. It is suitable for system control and detection such as new energy variable frequency drive, Converter Inverter, uninterruptible power supplies (UPS) and other industrial fields.

概况 / Product introduction

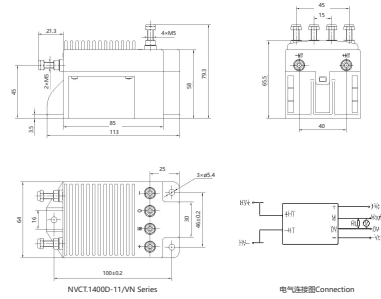
NVCT.1400D-11/VN电压传感器，适用于对交流、直流和脉动电压的隔离精确测量。被测电压信号与输出电流信号采用磁隔离，测量时一次侧与二次侧完全绝缘。

For the electronic measurement of voltage AC, DC and pulsed... with galvanic isolation between the primary (high power) and the secondary (electronic) circuits.

性能要求 / Product performance

序号 / No.	项目 / Item	主要参数 / Electrical characteristics
1	额定测量电压 / Primary nominal voltage	1400V
2	测量范围 / Primary current measuring range	0 ~ 2000V
3	电源电压 / Supply voltage	±15V ±5%V
4	额定输出电流 / Output current	7V
5	基本误差 / Accuracy (excluding offset)	±10.2% (25°C)
6	零向输出误差 / Electrical offset	±15mV (25°C)
7	线性度误差 / Linearity error	±0.1%
8	响应时间 / Step response time to 95 % of 95%	60µs
9	带宽 / Bandwidth (3dB)	DC~100kHz
10	电流消耗 / Current consumption	±32 mA ±V24VRL
11	耐压 / Voltage for AC insulation test	60V/50Hz/1min
12	工作温度 / Ambient operating temperature	-40°C ~ +85°C
13	储存温度 / Ambient storage temperature	-40°C ~ +85°C
14	重量 / Weight	±5% ±0.5g

安装示意图 / Dimensions (in mm)



序号 / No.

序号 / No.	安装接口要求 / Mechanical characteristics	主要参数 / Electrical characteristics
1	传感器安装方式 / Transducer fastening 螺母 / Recommended fastening torque	3 hole ø5.4mm, 3 M5 steel screws 3.5N.m±2.2N.m
2	电气连接 / Connection 推荐力矩 / Recommended fastening torque	M5 steel screws 2.2N.m±1.7N.m